



Keeping TRAC

December 2019 to December 2021



Where The Adventure Begins

Proverbs 16 verse 3 (Amplified Version) “Roll your works upon the Lord, commit and trust them wholly to Him; He will cause your thoughts to become agreeable to His Will and so shall your plans be established and succeed.

Proverbs 19 verse 21 (Amplified Version) “Many Plans are in a man’s mind, but it is the Lord’s purpose for him that will stand”

Who could have anticipated the pressures that 2020 and 2021 would bring to all of us? We are sure that everyone had plans over the last couple of years that have had to be postponed or even put aside but it is at times like these that we can be grateful that we can rely on the promises in the scriptures and acknowledge that with God’s hand of blessing on our endeavours nothing is impossible. We thank God daily that He has a purpose for all of us, and for TRAC specifically, that will stand no matter what the circumstances may be.

Completed Projects

Over the years TRAC has seen several improvements and developments and there are exciting plans afoot for the years ahead. Not least of these is that the new Toilet block has been completed and officially opened; the official opening of the Peace Garden also gave many the opportunity to gauge its progress over the years.



The old toilet blocks have been either repurposed or demolished. This has really opened out the area between the accommodation and the camping field bringing more light in and providing what has proved to be a very popular seating and picnic area. We have even managed to find time to install the first of 2 fountains on the lake with a double purpose of providing an attractive enhancement of the way the lake looks while helping to oxygenate the water and reduce the problems with algae and improve water quality overall for the fish in the lake.

New Manager



June 2021 saw the arrival of our new Centre Manager Douglas Bennett and his wife Anne. Douglas and Anne previously served in a capacity as dorm parents at Hebron School, a Christian boarding school in the hills in the south of India, where they cared for 19 teenage girls. Douglas was the facilities manager at the school while Anne assisted with the drama. Douglas is an engineer by trade and a former officer in the Royal Navy and Anne graduated from Elmhurst Ballet School in Camberley, Surrey and from the Guildhall School of Music and Drama in London.

Volunteers

Visitors to TRAC all comment on the quality of the facilities, and this is due to the diligence and hard work of the volunteer workforce without whom none of this would be possible. Everything here has been built and maintained by our volunteers, from the gardening through to the building projects and the maintenance of the grounds and equipment.

There is a continuing requirement for volunteers to become a part of this exciting project. We would welcome anyone to join the team and would ask that you continue to pray that we see new blood joining us in the coming year. It is a rewarding role with ample opportunity to expand skill sets and to experience the fulfilment of seeing plans come to fruition. Please get in touch if you are interested in joining the work parties on Tuesdays and Fridays or indeed at any other time if these days are not available for you.



Current Projects

The vision and scale of the building projects continues as improvements are made to facilities for the management of the centre and to the facilities available for the visitors. 2021 has seen the new portal barn rising at an amazing speed with expected completion early in 2022.



We have also started a longer-term project to install the first of 8 – 10 new wooden lodges or cabins that will surround the camping field. A vast amount of work has already taken place to run out the gas, electric and water to the first site and install the wastewater pipe. A concrete base has been laid and the structure has been delivered. Construction will take place from 04 January 2022 and although we cannot definitely say when it will be open, we hope that this will be before the busy season.

The first cabin will be laid out as a leader's lodge with 2 beds in one room, a sofa bed and kitchen diner in the next and a shower room. The rest of the lodges will be kitted out with bunk beds and a toilet and sink to avoid the need to go to the toilet block at night. When they are all complete the available indoor accommodation will increase from the current 41 beds to well over 100. It is an exciting prospect, and we continue to pray that the financial provision for the plans increases to allow these new facilities to be built as soon as possible.



The Customers

TRAC exists to serve our customers. The lockdown in 2020 and the restrictions at the start of 2021 have had a detrimental effect on the income we've been able to generate but praise God He has sustained us and the income we have been able to receive along with grants from individuals and the government have been sufficient to tide us over. Everyone who managed to get to TRAC this year has commented on the joy it has been to just let loose. It has been a happy year on site with lots of laughter and some awesome worship.



Christmas

Christmas 2021 has been a good year for decorations at TRAC. The new centre manager, ably assisted by the housekeeping staff, have worked wonders in the accommodation, conference room and chill out areas to decorate TRAC with a festive feel. The outside areas have benefited from a makeover as well with a bright and colourful spread of lighting that we hope will increase as they years go on.



Leadership and Future

The development at TRAC has been guided over the years by a number of trustees, who have not only overseen the development of the organisation and the facilities, but many have been actively involved in its implementation. We would like to take this opportunity to thank all of these saints who have given of their time and abilities to bring TRAC to where it is now.

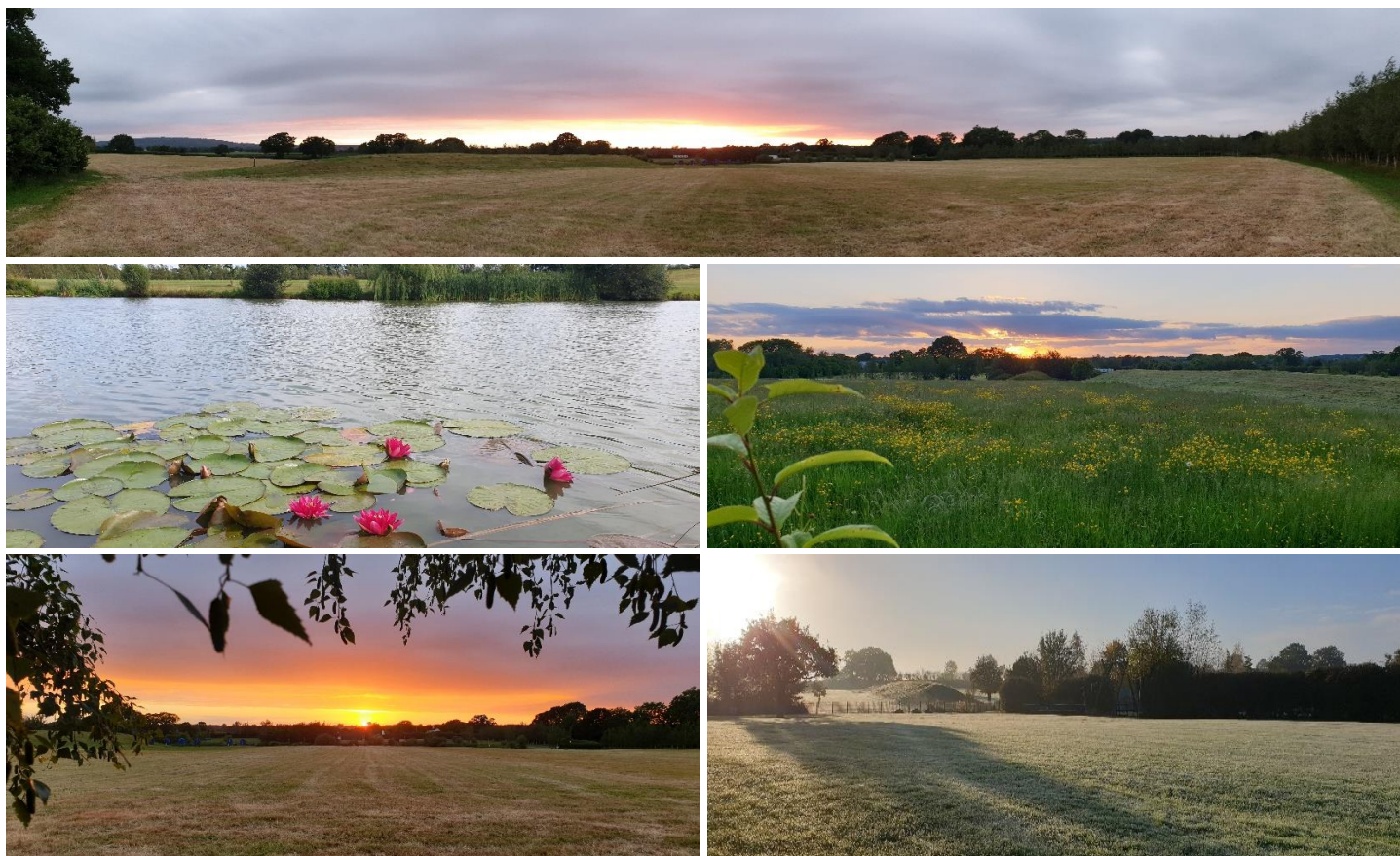
John and Angela Ettle were responsible for managing the running of TRAC at ground level for many years before 'retiring' (again) in 2018. Retirement is a loose term as John is still actively involved as a volunteer at TRAC. He was replaced as centre manager by Sarah Burtwell, who remained in the post until Covid changed things and she and her husband Paul decided to move on to new pastures.

John also worked in the capacity of the Secretary for the TRAC Trust but in 2021 he stood down from this role and has been replaced by Graham Highton.

As we move into the coming year, we are continuing to pray that our plans will be established and succeed and that God's purpose for TRAC will stand as Proverbs says. The possibilities and potential for growth at our amazing facility are endless. Please continue to pray for our leadership team as they seek God's purpose for the long term at TRAC. Jeremiah 29 v 11 (NIV) says "For I know the plans I have for you says The Lord, plans to prosper you....". We pray that all of our plans fulfil God's purposes and that TRAC continues to be a centre of excellence as we fulfil our Mission as specified to "Provide facilities within a Christian environment which enables families, young people and children to participate in and experience recreational, sporting, outdoor and leisure activities with the aim of developing the mental, moral, spiritual and physical well-being of the individual and enhance their maturity and life experience. To maximise their ability to be fully mature members of society regardless of financial, social, home and physical circumstances or disability".

TRAC remains a beautiful place with great facilities that will enhance the experience of holidays, adventures, or quiet breaks for anyone who comes here. Long may it continue to do so.

Amen !



We hope this gives you an insight into what's going on at TRAC and where your gifts and donations are going. You can get the latest news from TRAC on our website at

<https://www.tracnewent.org.uk/>

or from our Facebook page using the web address below

<https://www.facebook.com/tracnewent>

If you would like to make a donation, be added to the mailing list or can help TRAC in any way please contact the manager:

Douglas Bennett, Tom Roberts Adventure Centre (TRAC), Yates Farm Malswick, Newent, Gloucestershire, GL18 1HE

Tel: 07825 916512 / 01531 822606

Email: manager@tracnewent.org.uk

We would appreciate your prayers with thanks and praise:

- For ongoing site safety
- For our volunteers who turn up twice a week 50 weeks of the year
- For all our existing customers who keep coming back
- For all our new customers in 2021, many of whom have rebooked next year
- For all the bookings we have had for 2022 already and for all the gaps to be filled
- For keeping all the staff and volunteers safe from Covid 19 so far
- For our wonderful housekeeping staff who have tirelessly deep cleaned and cleared up after every group who visit us

Prayers would also be appreciated:

- For more mid-week bookings in school term time
- For our new Centre Manager Douglas and his wife Anne as they settle into the job
- For increased finance through more bookings and through gifts and grants so that the ongoing projects can be finalised, and new plans be implemented
- For continuing protection for our volunteers and staff as well visitors to TRAC
- For new volunteers to join the team bringing new skills and ideally youth to the mix